



Calvin Christian School Lobby
Edina, Minnesota



At Calvin Christian School's Edina Campus, Kodet designed an addition for the media center, computer lab, and administration office. The new space more than doubled their cramped quarters. Offices are located near the new entrance. This layout allowed for better control and monitoring of visitors and a visual integration of the two separate buildings on the site. The former offices and media center were converted into much needed classrooms.

The addition created a more welcoming entrance into the building. The glass and brick matches the existing architecture. Clerestory windows bring natural light into the length of the lobby. The windows in the new media center look into the adjacent Weber Park and offer a view of the wooded area surrounding the school.

The project was finished for the fall 2008 school year. From reusing an existing structure, to use of daylighting and recycled materials, this project addressed the most successful of sustainable practices. The new addition transformed this school campus into a vibrant new educational environment.



Proposed Site Plan of North Lakes Academy Wyoming, Minnesota

North Lakes Academy is a growing charter school that has been open since 1999. They are expanding from a middle school to include grades 10-12. NLA's mission is to provide a liberal arts education with small class sizes and rigorous college preparatory academics.

Kodet Architectural Group is designing a new 38,000 sq. ft. building that will house approximately 480 students in grades 5-12. Our firm is working closely with NLA to provide students with quality learning in a responsive learning atmosphere.

The current site being considered is 8 acres in Wyoming, Minnesota. With a nearby wooded area and lake, Kodet considers sustainable design important to the project. We are reviewing building placement on the site that preserves green space and situates the school to make the best use of daylighting. Rain gardens will flank the entrance into the building and will help capture and utilize runoff.

The Middle School and High School will be located in separate wings. Core functions, including offices, gymnasium, media center, etc. will be centrally located. A light monitor will help to illuminate the gathering area outside of the gym and will conserve energy.

Construction is estimated to start in the fall of 2009.



St. Croix Preparatory Academy broke ground last fall for a 58-acre educational campus near Stillwater in Baytown Township. Designed by Kodet Architectural Group, the new 90,000-square-foot school will open in September 2009 for the first day of school. It will serve up to 1,000 students in kindergarten through 12th grades, as well as the community at-large.

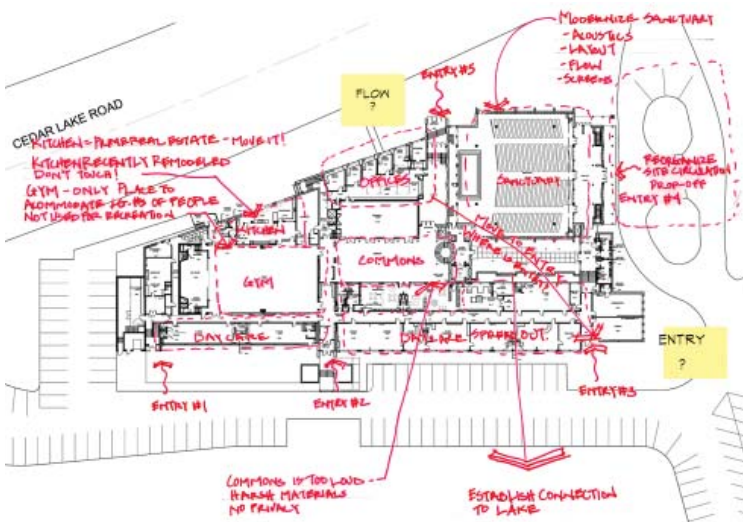
Chartered in 2004, St. Croix Preparatory Academy was the first independent public school in the eastern Twin Cities suburban area specifically dedicated to offering a classical liberal arts curriculum with an emphasis on the development of each student's personal character and leadership qualities.

Sited on 58 acres of green space with lots of trees and rolling hills, the large tract gives the school the opportunity to offer a full range of athletics to its students. St. Croix Prep plans to incorporate these natural surroundings into its science curriculum.

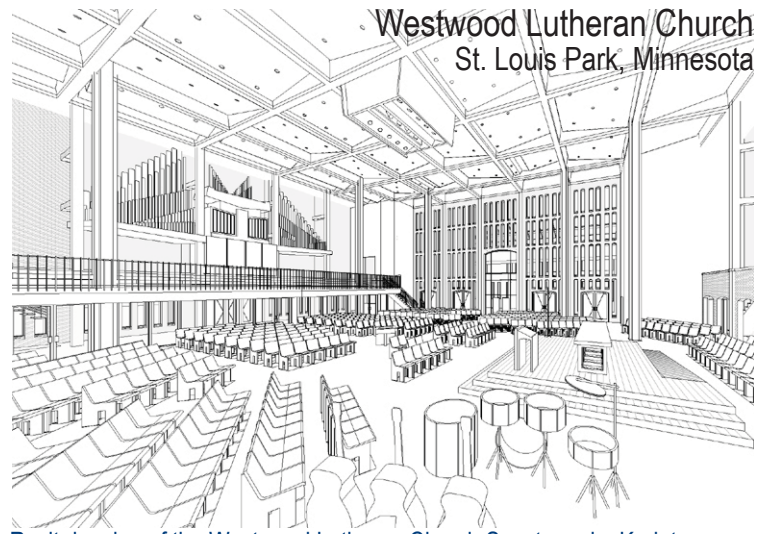
Respecting the environment, Kodet designed the new St. Croix Prep to meet sustainable, energy-efficient design criteria. Key features and benefits include high indoor air quality, a plentiful number of large windows for daylighting, and the use of low-maintenance brick and pre-finished metal cladding materials.



Photo taken February 2009



Planning diagram that was used during a Westwood congregation meeting.



Revit drawing of the Westwood Lutheran Church Sanctuary by Kodet.

Westwood Lutheran Church is an award-winning project designed by Ed Sovik, FAIA in 1963. Kodet Architectural Group was asked to prepare a master plan, phasing plan, and long-term vision for the facility. In addition, the design was to maintain the original architecture while restoring and remodelling the building to accommodate current worship needs.

Some of the goals include:

- Renovation and restoration of the sanctuary.
- Redesign of the seating to accommodate a variety of liturgies.
- New lighting that meets today's needs and requires little maintenance.
- New gathering/lobby area to accommodate events and provide an organizing element to the large building.
- Expanded hospitality area to accommodate congregation gatherings.
- Expanded meeting spaces.
- New offices to meet circulation and work demands.

Kodet Architectural Group worked closely with the Building Committee, the various departments, staff members, and the congregation to complete the programming and master planning.

The project at Westwood Lutheran Church will be phased over the next 20 years, with the most immediate changes to take place in the next three years. The first phase includes the sanctuary restoration and mechanical system upgrade and is expected to begin fall 2009.

This project recognizes the importance of Modern design. The congregation is preserving this period of architecture while meeting the needs of the people who are using the building today.



Kodet Offices Roof Repair
Minneapolis, Minnesota

The **offices of Kodet Architectural Group** are in a historic structure that was completed in 1893. The previous roof was 115 years old and did not leak, but occasionally the slate tiles would come loose and each year a few more would need to be reattached. The firm made the decision to replace the roof using LEED sustainable guidelines.

The new roof utilized the original slate, copper nails instead of steel, and copper gutters and flashing. The original steel nails had rusted heads which had caused the slate to loosen. The original slate was inspected and found to be in excellent shape. The slate was removed and approximately 50% to 60% was able to be reused and was able to be matched with new slate. Ice and water shield underlayment was used with two layers of 30# felt to cushion the slate.

Some of the original crown moulding on the dormers had rotted. Pieces were removed and duplicated. New knives were fabricated to match the 1893 moulding.

The new roof will last in excess of a 115 years. All who worked on the project look forward to verifying the longevity of the installation.

Kaufman Roofing was the roofing contractor. Kodet Architectural Group can advise clients with historic properties on roof replacement and historic preservation.